

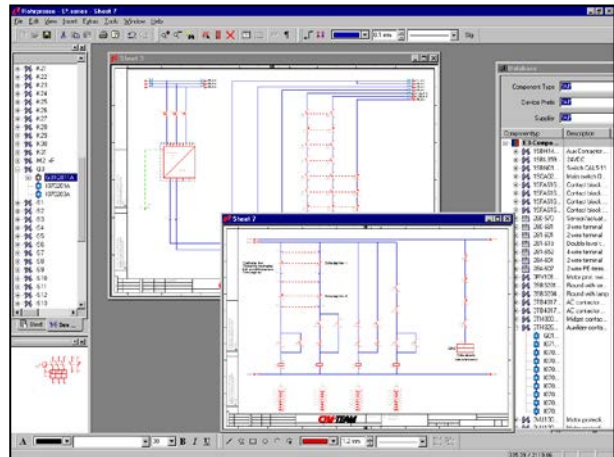
E³.schematic provides a comprehensive, Windows® based, solution for the design and documentation of today's complex electrical power and control systems. It is a state-of-the-art proven application, based on common component databases and symbol libraries to ensure a unique representation of circuit diagrams, producing accurate, error-free schematic with simultaneous manufacturing and support documentation.

With E³.schematic you can increase your design productivity using the most advanced ECAD engine that links schematic design, panel layout, terminal diagrams, cable block diagrams and wiring design tasks in a single design environment.

Because E³.schematic offers integrated design tasks along with the consistent Windows® graphical user interface, you can maximize engineering design skills and minimize training costs.

A short overview of the functionality of E³.schematic:

- True Windows® environment
- Drag & Drop functionality
- 256 different layers per object type
- Query (search) capabilities for signals, texts, cross references, symbols and components
- Online, hypertext linked, help
- Customizable color representation of design environment (e.g. line diameter of connection lines, cable cross-sections, signal type, etc.)
- DIN, ANSI, JIC, IEC representation of drawings
- Standard interfaces e.g. EXF, DXF, DWG, graphic images,
- bi-directional COM interface.
- Icon-based selection of symbols and components according to 'Search' and 'Exchange' operations
- Freely definable signal attributes (e.g. wire numbers)
- Freely definable grid and text sizes, characters and line fonts
- Read, Write, Copy, Paste, Delete, Rotate, Mirror drawings and areas
- Powerful exchange capabilities for symbols and components
- Freely definable documentation (e.g. BOMs, connection diagrams, terminal diagrams)
- Online terminal diagram
- Customizable object-oriented user interface, including integration of 3rd party applications
- Dynamic Zoom-in and Zoom-out, including Panning
- Dynamic terminal diagrams, changes reflected in schematic and vice versa



- Management of large designs
- OLE linking to other applications
- Support for embedded documentation, e.g. Word and Excel documents
- Object-oriented data
- Visual Basic Interface
- Support of customer-specific border formats
- Online cross references for signals and components within drawings
- Online design rule checks of short-circuit, multiple symbol assignment and overloaded components
- Freely definable components with customizable symbol dependencies
- Metric & Imperial units

E³.schematic can be complemented with other modules of the E³.series, for example

E³.cable for the creation of cable harnesses and block diagrams.

E³.panel for the complete design of control panels, including layouts and wiring.

E³.view for distributing the E³.series projects and data to other people and organizations.

For more information please contact

E-Mail: info@mip-group.com

Northern Europe : MIP Nordic O.Ü
 Rotermanni 5-58 10111 Tallinn/ESTONIA
 Tel.: +372 62 767 20 Fax: +372 62 453 70



Central and Eastern Europe : MIP Kft
 Vörösmarty u. 53/2 1064 Budapest/HUNGARY
 Tel.: +36 70 580 44 15 Fax: +36 70 580 44 15

Southern Europe : MIP Ltd
 Simitas 5/21 Merter 34173 Istanbul/TURKEY
 Tel.: +90 532 422 28 52 Fax: +90 212 539 45 28

<http://www.mip-group.com/zuken/e3.htm>